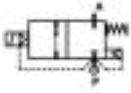


2/2 WAY PILOT OPERATED SOLENOID VALVE, G 1/4" ÷ G 1"



normally closed

TYPE: B203/204/205/206/222

TECHNICAL SPECIFICATIONS

Media:	water, oil, air
Media temperature:	-10°C ÷ +90°C
Ambient temperature:	-10°C ÷ +50°C
Body material:	brass (CW617N EN 12165)
Operator material:	stainless steel
Operator seal material:	NBR
Seal and Diaphragm material:	NBR
Coil power:	AC 10VA (holding) AC 16VA (inrush) DC 7W
Protection class:	IP 65 (with connector)

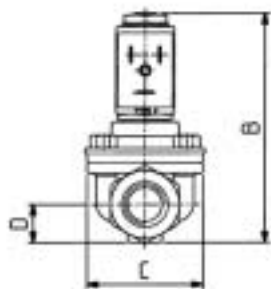
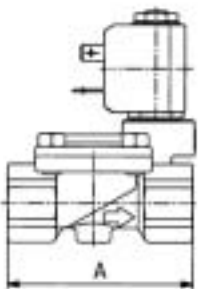


OPTIONS

Normally open (Ex. code <u>RB206DBY</u>)
Manual override (Ex. code <u>B204DBZM</u>)
Speed control screw (only for <u>B206DBYV</u> and <u>B222DBYV</u>)
EPDM seal for air and hot water MAX 120°C (Ex. code <u>B204DEZ</u>)
FKM seal for air, water, oil MAX 130°C (Ex. code <u>B204DVZ</u>)
Version with operator ø 14,5 and coil type 7000 available on request (Ex. code <u>D205DBZ</u>)

SELECTION TABLE

VALVE	G connection	Nominal Diameter	Flow rate kvs	min	OPD		COILS	
					AC [bar]	DC [bar]	Code	[Volts/Hz]
Code	[ISO 228]	[mm]	[l/min]	[bar]				
B203DBZ	1/4"	13	26	0.3	16	16	2250	24V DC
B204DBZ	3/8"	13	55	0.3	16	16	2200	24V 50/60Hz
B205DBZ	1/2"	13	63	0.3	16	16	2400	110V 50Hz - 120V 60Hz
B206DBX compact	3/4"	21	90	0.3	16	16	2600	200V 50Hz - 220V 60Hz
B206DBY	3/4"	25	140	0.3	16	16	2700	230V 50Hz - 240V 60Hz
B222DBY	1"	25	216	0.3	16	16		



DIMENSIONS & WEIGHTS

G connection	A	B	C	D	weight
[ISO 228]	[mm]	[mm]	[mm]	[mm]	[Kg]
1/4"	67	90	44	15	0.4
3/8"	67	90	44	15	0.4
1/2"	67	90	44	15	0.4
3/4" compact	82	105	50	20.25	0.6
3/4"	96	115	70	23	1.2
1"	96	115	70	23	1.2